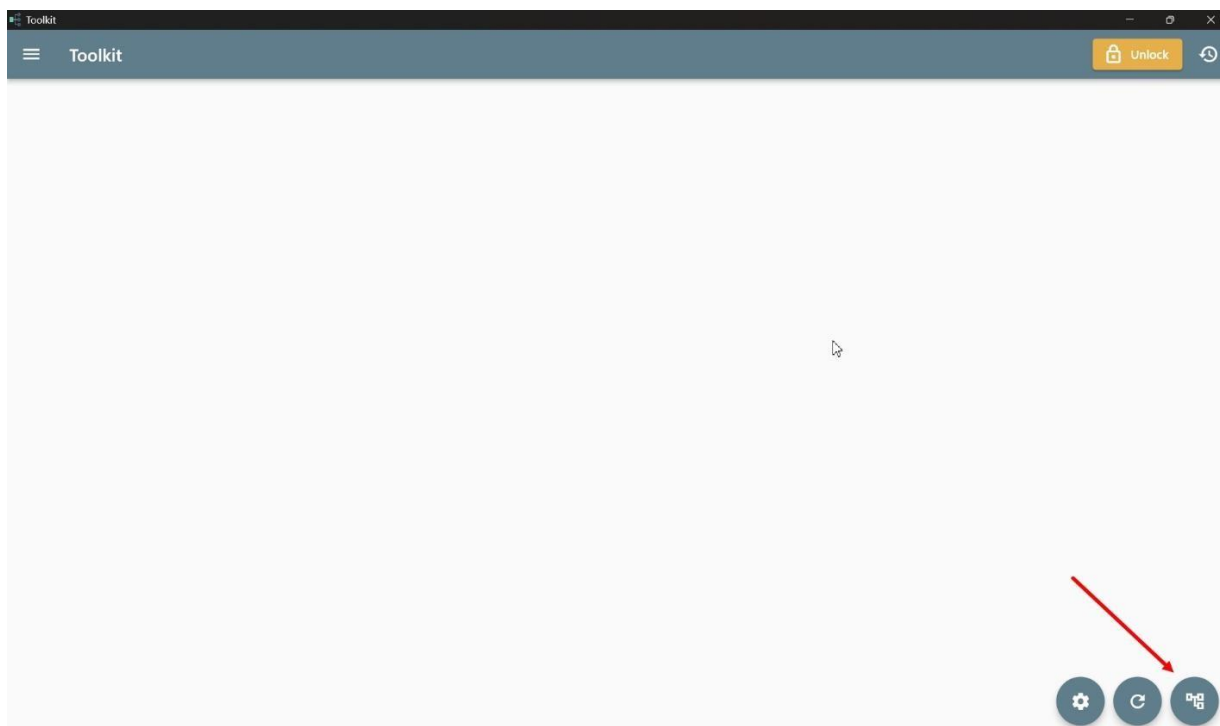


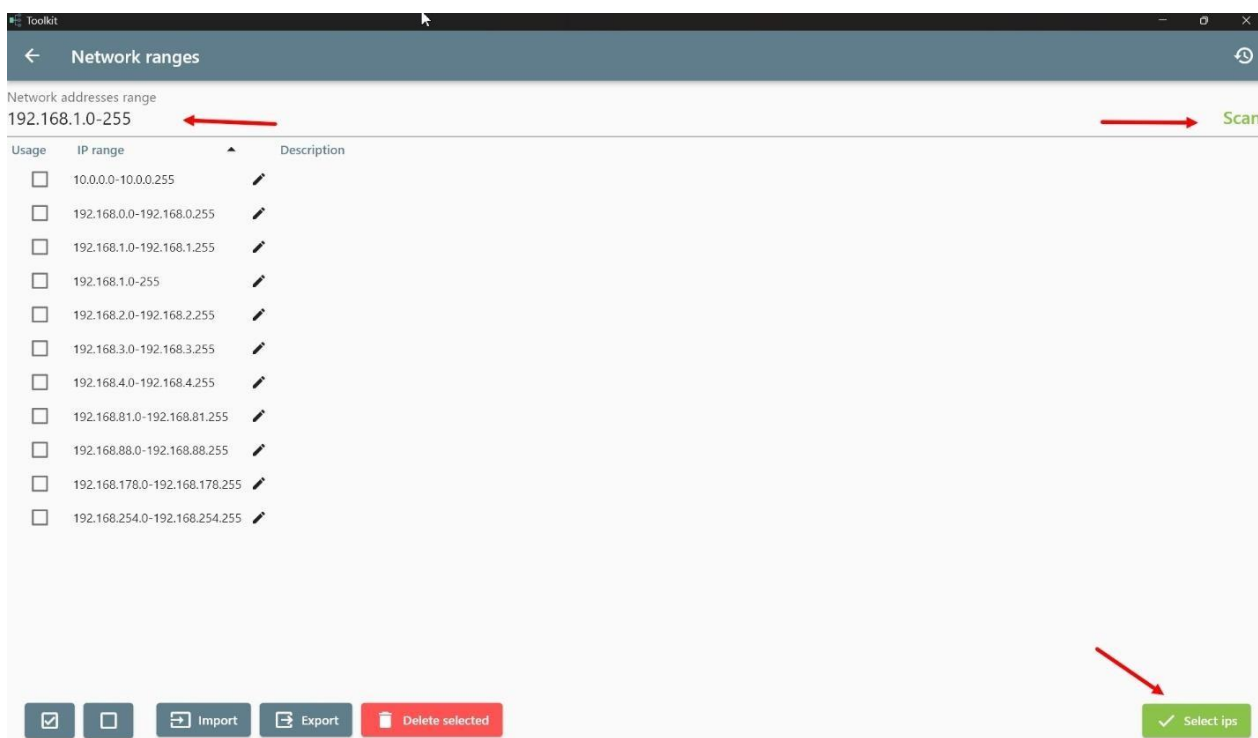


Toolkit download: https://drive.google.com/drive/folders/1FreAlz3dY5BQuyG6zCtq6jRsoOPyNkjG?usp=drive_link

1. Set the desired IP range, click on "Network ranges".

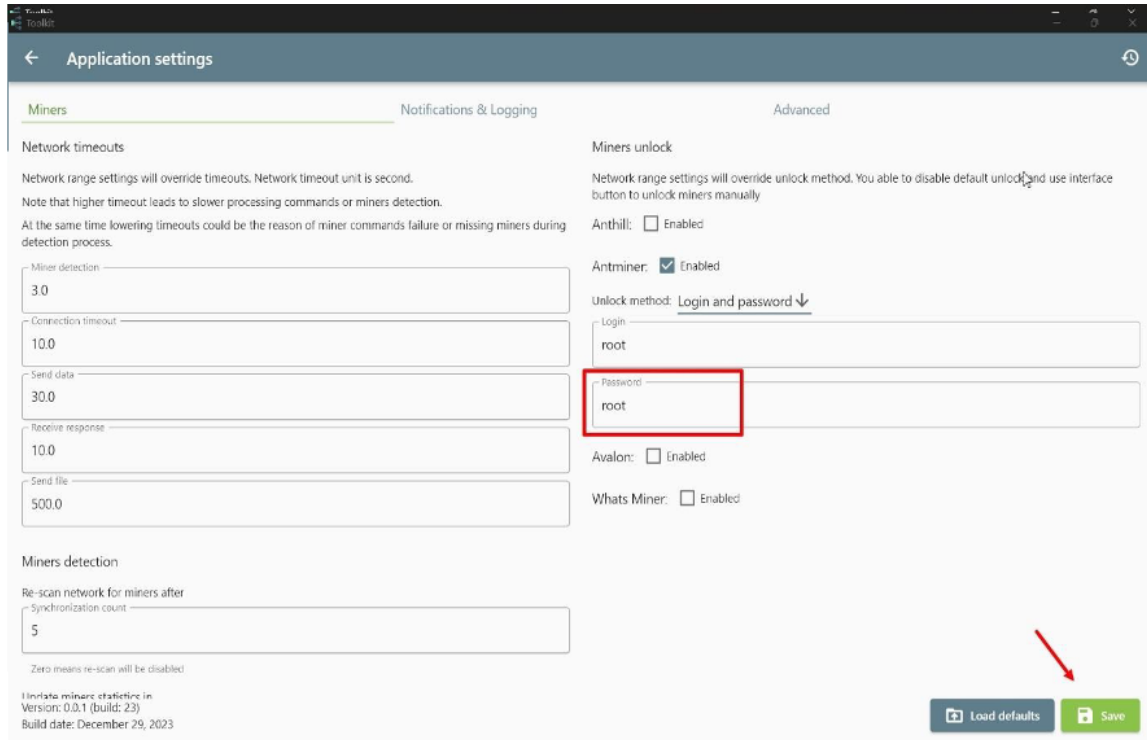


2. Specify the IP range of the miners and click «Scan», «Select ips».

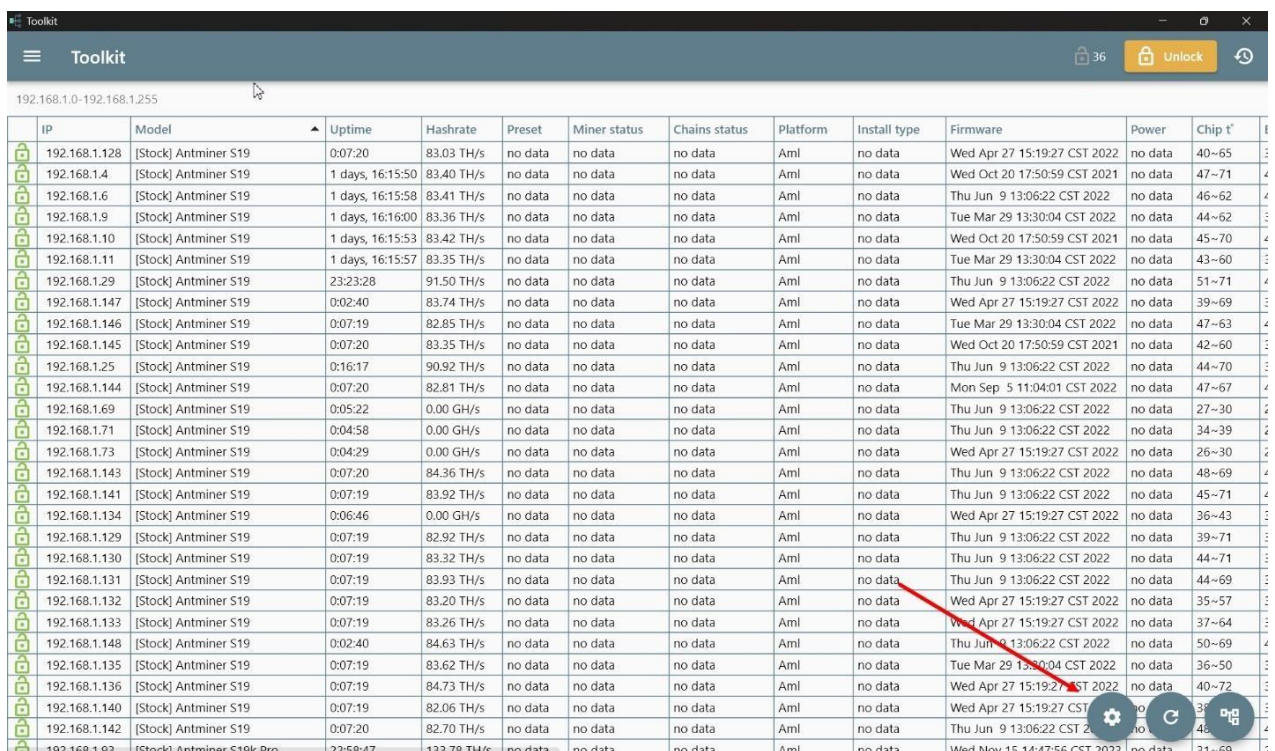




3. If the password is standard, we leave everything as it is, if the password has been changed, open the Toolkit settings and enter the password in the marked field



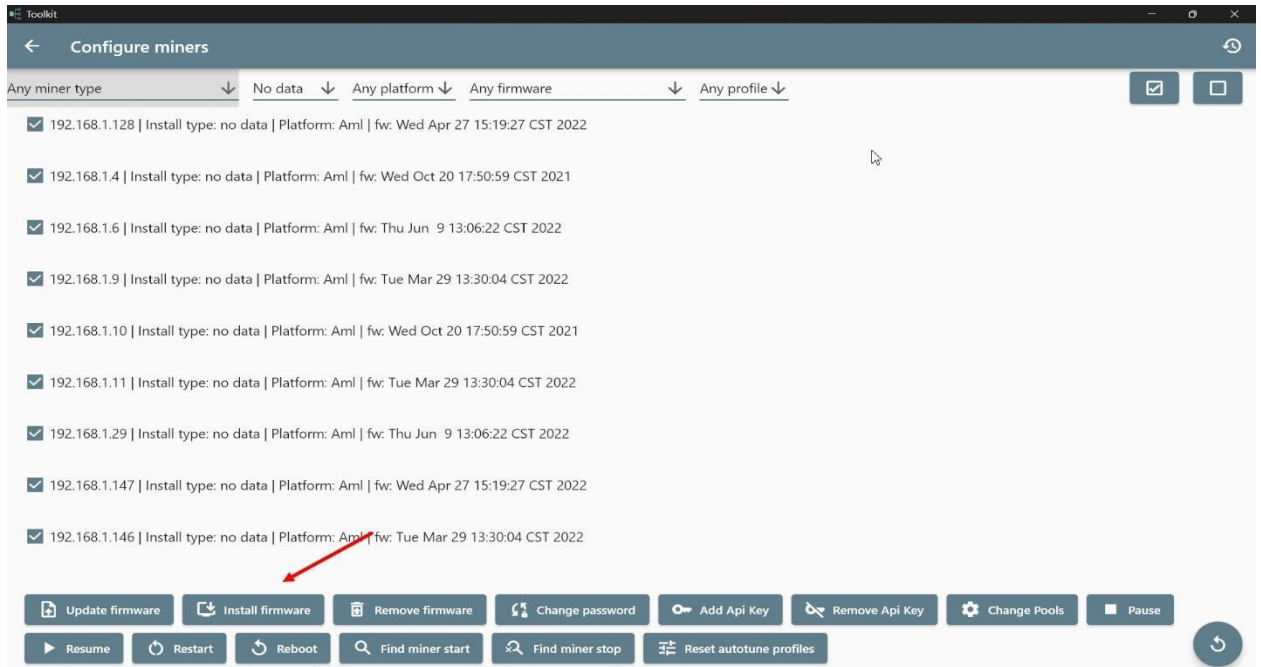
4. Next open the «Configure miners» menu.



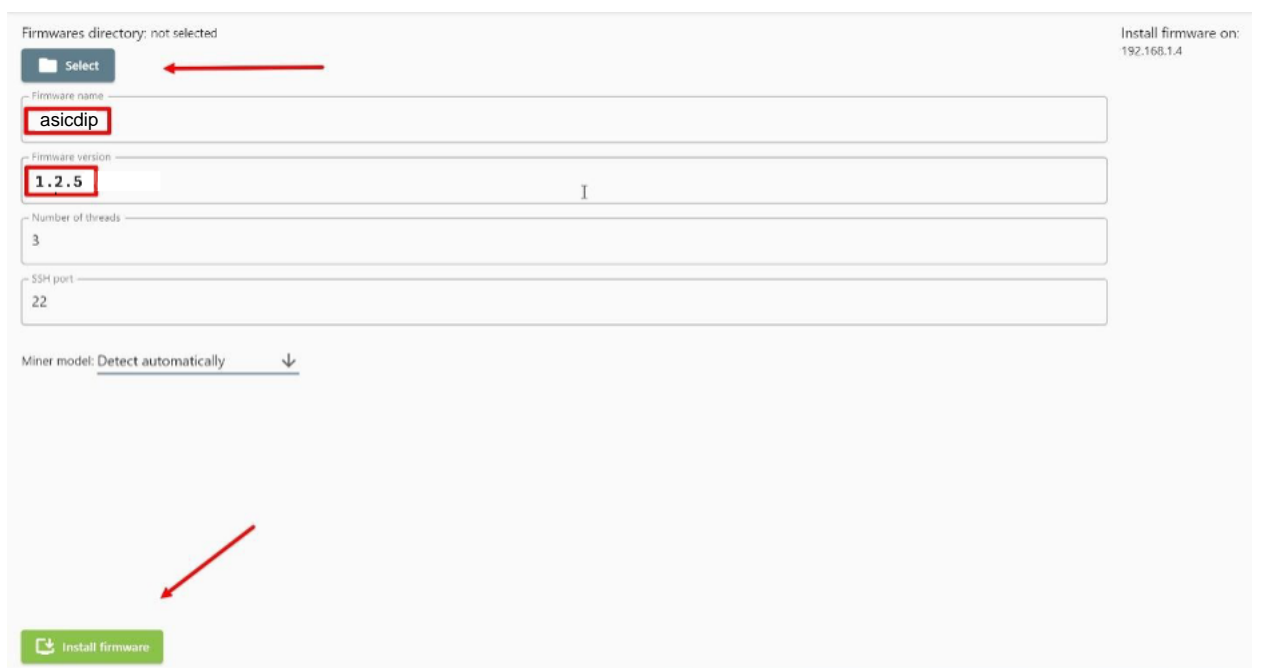
	IP	Model	Uptime	Hashrate	Preset	Miner status	Chains status	Platform	Install type	Firmware	Power	Chip t°
	192.168.1.128	[Stock] Antminer S19	0:07:20	83.03 TH/s	no data	no data	no data	Aml	no data	Wed Apr 27 15:19:27 CST 2022	no data	40~65
	192.168.1.4	[Stock] Antminer S19	1 days, 16:15:50	83.40 TH/s	no data	no data	no data	Aml	no data	Wed Oct 20 17:50:59 CST 2021	no data	47~71
	192.168.1.6	[Stock] Antminer S19	1 days, 16:15:58	83.41 TH/s	no data	no data	no data	Aml	no data	Thu Jun 9 13:06:22 CST 2022	no data	46~62
	192.168.1.9	[Stock] Antminer S19	1 days, 16:16:00	83.36 TH/s	no data	no data	no data	Aml	no data	Tue Mar 29 13:30:04 CST 2022	no data	44~62
	192.168.1.10	[Stock] Antminer S19	1 days, 16:15:53	83.42 TH/s	no data	no data	no data	Aml	no data	Wed Oct 20 17:50:59 CST 2021	no data	45~70
	192.168.1.11	[Stock] Antminer S19	1 days, 16:15:57	83.35 TH/s	no data	no data	no data	Aml	no data	Tue Mar 29 13:30:04 CST 2022	no data	43~60
	192.168.1.29	[Stock] Antminer S19	23:23:28	91.50 TH/s	no data	no data	no data	Aml	no data	Thu Jun 9 13:06:22 CST 2022	no data	51~71
	192.168.1.147	[Stock] Antminer S19	0:02:40	83.74 TH/s	no data	no data	no data	Aml	no data	Wed Apr 27 15:19:27 CST 2022	no data	39~69
	192.168.1.146	[Stock] Antminer S19	0:07:19	82.85 TH/s	no data	no data	no data	Aml	no data	Tue Mar 29 13:30:04 CST 2022	no data	47~63
	192.168.1.145	[Stock] Antminer S19	0:07:20	83.35 TH/s	no data	no data	no data	Aml	no data	Wed Oct 20 17:50:59 CST 2021	no data	42~60
	192.168.1.125	[Stock] Antminer S19	0:16:17	90.92 TH/s	no data	no data	no data	Aml	no data	Thu Jun 9 13:06:22 CST 2022	no data	44~70
	192.168.1.144	[Stock] Antminer S19	0:07:20	82.81 TH/s	no data	no data	no data	Aml	no data	Mon Sep 5 11:04:01 CST 2022	no data	47~67
	192.168.1.69	[Stock] Antminer S19	0:05:22	0.00 GH/s	no data	no data	no data	Aml	no data	Thu Jun 9 13:06:22 CST 2022	no data	27~30
	192.168.1.71	[Stock] Antminer S19	0:04:58	0.00 GH/s	no data	no data	no data	Aml	no data	Thu Jun 9 13:06:22 CST 2022	no data	34~39
	192.168.1.73	[Stock] Antminer S19	0:04:29	0.00 GH/s	no data	no data	no data	Aml	no data	Wed Apr 27 15:19:27 CST 2022	no data	26~30
	192.168.1.143	[Stock] Antminer S19	0:07:20	84.36 TH/s	no data	no data	no data	Aml	no data	Thu Jun 9 13:06:22 CST 2022	no data	48~69
	192.168.1.141	[Stock] Antminer S19	0:07:19	83.92 TH/s	no data	no data	no data	Aml	no data	Thu Jun 9 13:06:22 CST 2022	no data	45~71
	192.168.1.134	[Stock] Antminer S19	0:06:46	0.00 GH/s	no data	no data	no data	Aml	no data	Wed Apr 27 15:19:27 CST 2022	no data	36~43
	192.168.1.129	[Stock] Antminer S19	0:07:19	82.92 TH/s	no data	no data	no data	Aml	no data	Thu Jun 9 13:06:22 CST 2022	no data	39~71
	192.168.1.130	[Stock] Antminer S19	0:07:19	83.32 TH/s	no data	no data	no data	Aml	no data	Thu Jun 9 13:06:22 CST 2022	no data	44~71
	192.168.1.131	[Stock] Antminer S19	0:07:19	83.93 TH/s	no data	no data	no data	Aml	no data	Thu Jun 9 13:06:22 CST 2022	no data	44~69
	192.168.1.132	[Stock] Antminer S19	0:07:19	83.20 TH/s	no data	no data	no data	Aml	no data	Wed Apr 27 15:19:27 CST 2022	no data	35~57
	192.168.1.133	[Stock] Antminer S19	0:07:19	83.26 TH/s	no data	no data	no data	Aml	no data	Wed Apr 27 15:19:27 CST 2022	no data	37~64
	192.168.1.148	[Stock] Antminer S19	0:02:40	84.63 TH/s	no data	no data	no data	Aml	no data	Thu Jun 9 13:06:22 CST 2022	no data	50~69
	192.168.1.135	[Stock] Antminer S19	0:07:19	83.62 TH/s	no data	no data	no data	Aml	no data	Tue Mar 29 13:30:04 CST 2022	no data	36~50
	192.168.1.136	[Stock] Antminer S19	0:07:19	84.73 TH/s	no data	no data	no data	Aml	no data	Wed Apr 27 15:19:27 CST 2022	no data	40~72
	192.168.1.140	[Stock] Antminer S19	0:07:19	82.06 TH/s	no data	no data	no data	Aml	no data	Wed Apr 27 15:19:27 CST 2022	no data	38~57
	192.168.1.142	[Stock] Antminer S19	0:07:20	82.70 TH/s	no data	no data	no data	Aml	no data	Thu Jun 9 13:06:22 CST 2022	no data	48~69
	192.168.1.93	[Stock] Antminer S19k Pro	22:58:47	133.78 TH/s	no data	no data	no data	Aml	no data	Wed Nov 15 14:47:56 CST 2023	no data	31~69



5. Select the required asics for flashing and click on the "Install firmware"



6. Specify the FOLDER!!! where are the firmware files (nand install.tar.gz for your miner model). Put the firmware name in the "Firmware name" line, Specify the current version - 1.2.5 or new release and click "Install firmware".



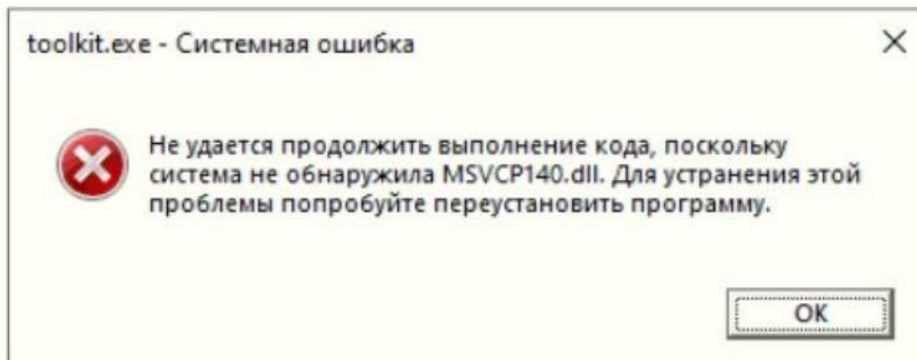


7. A status bar will appear where you can track the firmware process. After it disappears, you can configure it via the web interface, after clearing the browser cache (Ctrl+F5).





Note: if a library availability error occurs when opening the Toolkit:



You must install the latest supported versions of the Visual C++ Redistributable component <https://www.techpowerup.com/download/visual-c-redistributable-runtime-package-all-in-one/>